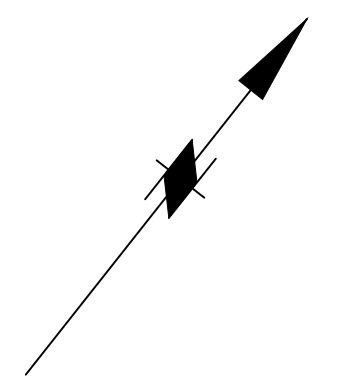
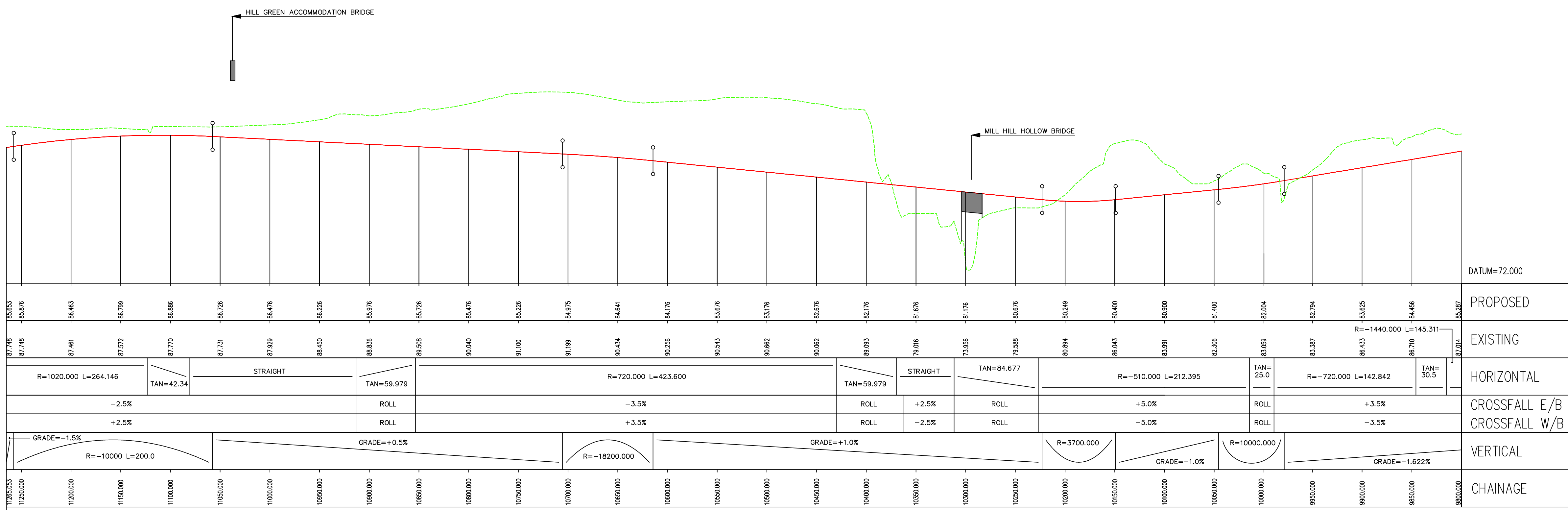
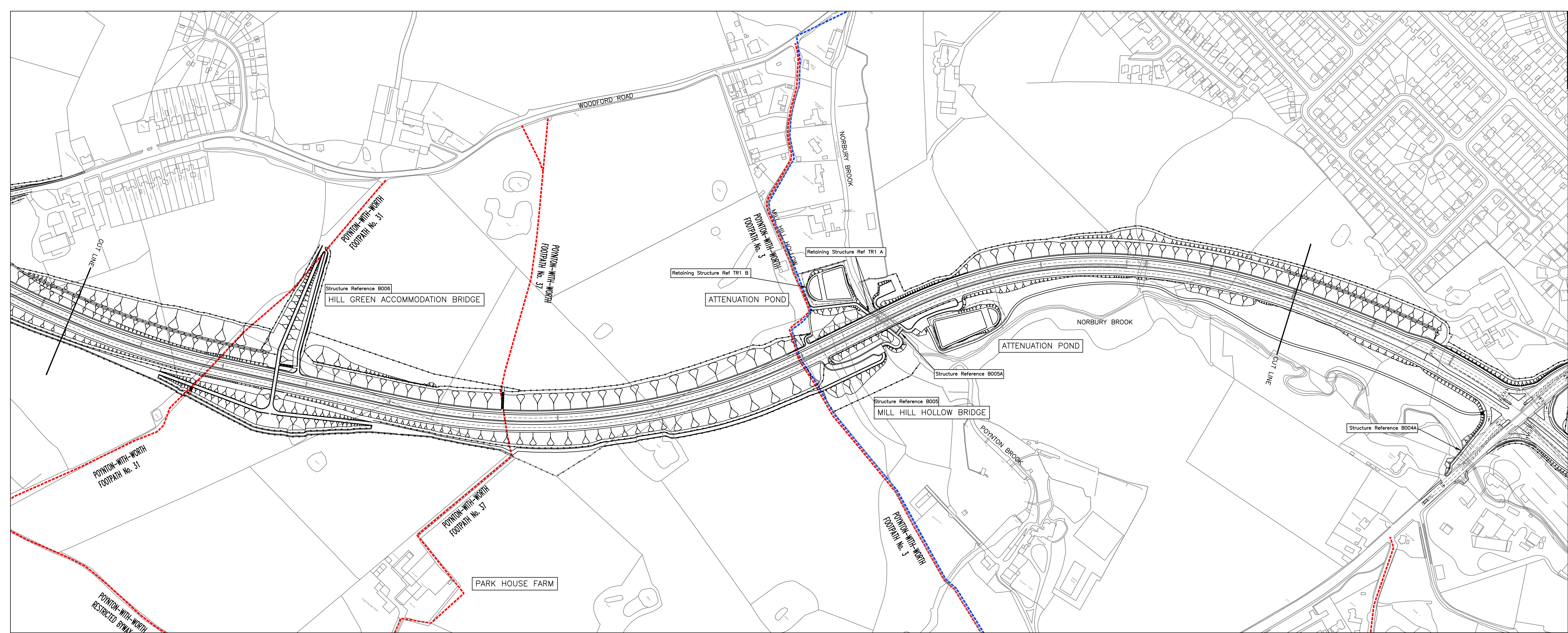


This map is reproduced from Ordnance Survey material with the permission of Ordnance Survey on behalf of the Controller of Her Majesty's Stationery Office © Crown copyright. Unauthorised reproduction infringes Crown copyright and may lead to prosecution of civil proceedings. Stockport Metropolitan Borough Council 100019571 2012



- KEY**
- EXISTING DEFINITIVE PROW
  - EXISTING BRIDLEWAY
  - LADYBROOK VALLEY INTEREST TRAIL
  - PROPOSED FENCELINE



SECTION ALONG CENTRELINE OF SEMMS RELIEF ROAD  
(SPEED LIMIT 50MPH)

CHAINAGE SLIPPAGE DUE TO FRAGMENTATION OF SCHEME DEVELOPMENT

Rev.	Drawn	Checked	Date	Revision Details

[www.semms.info](http://www.semms.info)

Jim McMahon BS: C.Eng. MICE  
SERVICE DIRECTOR, MAJOR PROJECTS

STOPFORD HOUSE  
STOCKPORT SK11 5JG  
TEL : 0161 474 4351  
FAX : 0161 474 4553

Job Title  
**A6 to MANCHESTER AIRPORT RELIEF ROAD**

Drawing Title  
**PLANNING APPLICATION GENERAL ARRANGEMENT SHEET 3 of 9**

Drawn	Engineer	Checked	Approved
SP	SP	NH	AB
Date	Date	Date	Date
03.10.13	03.10.13	03.10.13	03.10.13
Size	Scale		
A1	Hz 1:2500, Vt 1:250		
SCG No.	Filename		
Drawing No.	Revision		
1007/3D/DF7/A6-MA/GA/203			